



AL OSOOL BLDG. Metallic Const. Ind. LLC.

We are pleased to introduce ourselves as Al Osool Bldg. Metallic Const. Ind. LLC located in Industrial Area 13, Sharjah. We are manufacturing a wide range of Fire Cabinets. We are making all types of Fire Cabinet like Fire Hose Reel Cabinets, Fire Extinguisher Cabinets, Fire Hose Cabinets, Breaching Inlet Cabinets, Mimic Panels, Garbage Chute, Control Panel etc. We have more than 10 years experience in this field. We are using high quality materials and manufacturing techniques. We have the best team of Engineers & technicians with the latest technology in hand to accommodate the needs of our customers from the design stage to the completion of the project. We have made lots of cabinets to different projects in UAE, Qatar, Oman, Bahrain, Saudi Arabia, Egypt, Sudan Jordan etc.

- We can produce any type of fire cabinets as per the client's requirement.
- We have all the facilities like CNC Punching, Laser Machines, Water jet Cutting, CNC Bending, Powder Coating, Transportation etc.

Breaching Inlet Cabinet

Type	Thickness	Material		Capacity	Finish
		Door	Back box		
Recessed	1.2 mm	Mild steel	Mild steel	2way breaching inlet	Red powder coated
Surface mounted	1.5 mm	Stainless steel	Stainless steel	4 way breaching inlet	S.S. Brush finish
		Wired glass			S.S. Mirror finish
Clear glass		S.S. Hair line			
Fiber glass					
Semi recessed					
Self Standing					



Industrial Area 13 - Sharjah - United Arab Emirates
 Tel : +971 6 538 55 72 - Fax : +971 6 538 40 45 - P.O.Box : 47632 Sharjah - UAE.
 Doha Office No. +974 66 858734 - +974 66 157440
 Email : sales@alosooulae.com - Website : www.alosooulae.com



AL OSOOL

AL OSOOL BLDG. METALLIC CONST. IND. LLC.
الأصول لصناعة الأشغال المعدنية للمباني ذ.م.م.

FIRE CABINET

Technical Specification

Full Mild Steel Type

Dimension	Any size as per. requirement
Material	Stainless steel // Mild steel / G.I
Thickness	1.2/1.5 mm / 2.0 mm - up to 3.00 mm
Installation	Surface / Wall Mounted, Or recessed type
Capacity	Manual or Automatic swing, fixed hose reel 3/4" or 1"
finish	Red powder coated, S.S., Mirror Finish, Brush Finish, Hair line



Technical Specification

Full SS Type

Dimension	Any size as per. requirement
Material	Stainless steel // Mild steel / G.I
Thickness	1.2/1.5 mm
Installation	Surface / Wall Mounted, Or recessed type
Capacity	Manual or Automatic swing, fixed hose reel 3/4" or 1"
finish	Red powder coated, S.S., Mirror Finish, Brush Finish, Hair line



Technical Specification

SS and MS Type

Dimension	Any size as per. requirement
Material	Stainless steel // Mild steel / G.I
Thickness	1.2/1.5 mm
Installation	Surface / Wall Mounted, Or recessed type
Capacity	Manual or Automatic swing, fixed hose reel 3/4" or 1"
finish	Red powder coated, S.S., Mirror Finish, Brush Finish, Hair line



Industrial Area 13 - Sharjah - United Arab Emirates
Tel : +971 6 538 55 72 - Fax : +971 6 538 40 45 - P.O.Box : 47632 Sharjah - UAE.
Doha Office No. +974 66 858734 - +974 66 157440
Email : sales@alosoolluae.com - Website : www.alosoolluae.com

AL OSOOL

AL OSOOL

AL OSOOL BLDG. METALLIC CONST. IND. LLC.
الأصول لصناعة الأشغال المعدنية للمباني ذ.م.م.

FIRE GLASS CABINETS

Technical Specification	Glass Door
Dimension	Any size as per. requirement
Material	Stainless steel // Mild steel / G.I
Thickness	1.2/1.5 mm / 2.0 mm - up to 3.00 mm
Installation	Surface / Wall Mounted, Or recessed type
Capacity	Manual or Automatic swing, fixed hose reel 3/4" or 1"
finish	Red powder coated, S.S., Mirror Finish, Brush Finish, Hair line



D. Door Wired Glass Cabinet



Self Standing Cabinet with Glass

STAINLESS STEEL MARBLE CABINETS



Marble Cabinet



Marble Door & Architrave with Recessed pull handle



Stainless Steel Marble Cabinets / Decoration Extinguishers Box

WOOD FINISH METAL CABINET



Wood Finish Metal Cabinets



Wood Finish Door



Single Cabinet Wood Finish

Industrial Area 13 - Sharjah - United Arab Emirates
Tel : +971 6 538 55 72 - Fax : +971 6 538 40 45 - P.O.Box : 47632 Sharjah - UAE.
Doha Office No. +974 66 858734 - +974 66 157440
Email : sales@alosooulae.com - Website : www.alosooulae.com

AL OSOOL

AL OSOOL

AL OSOOL BLDG. METALLIC CONST. IND. LLC.
الأصول لصناعة الأشغال المعدنية للمباني ذ.م.م

CUSTOMIZED CABINETS



First AID Box



Mimc Panel



Telephone Box



Cable Tray



Decoration SS



GRP Cabinet



Enclosure Cabinet



Fire Extinguisher Stand



Control Panel



Water Meter Cabinet



Full MS CO2 Multitrack Cabinet



Fire Hose Reel

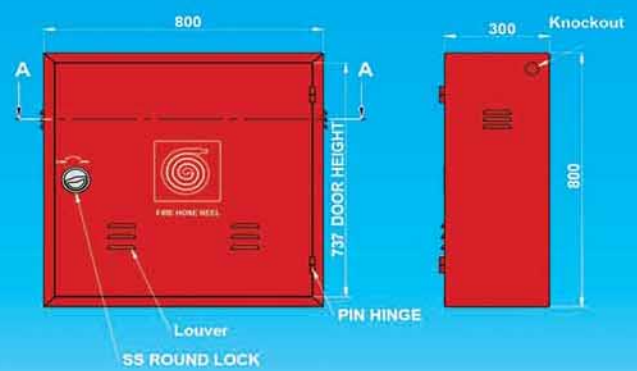
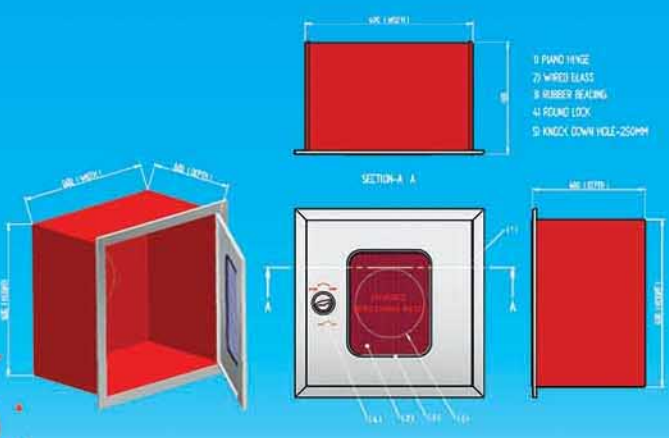
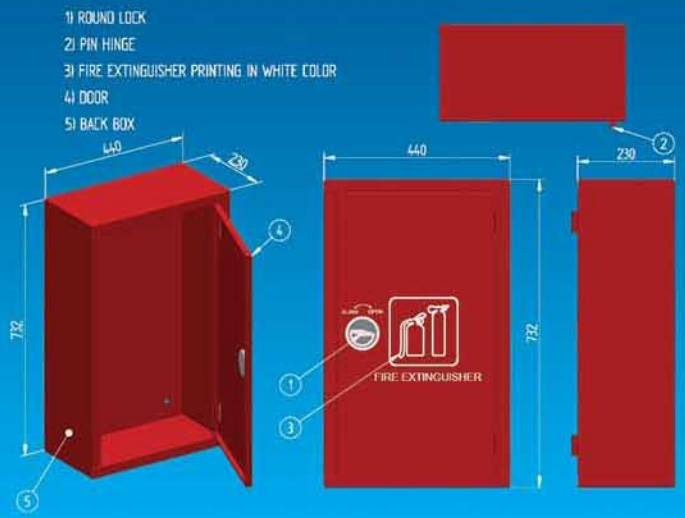
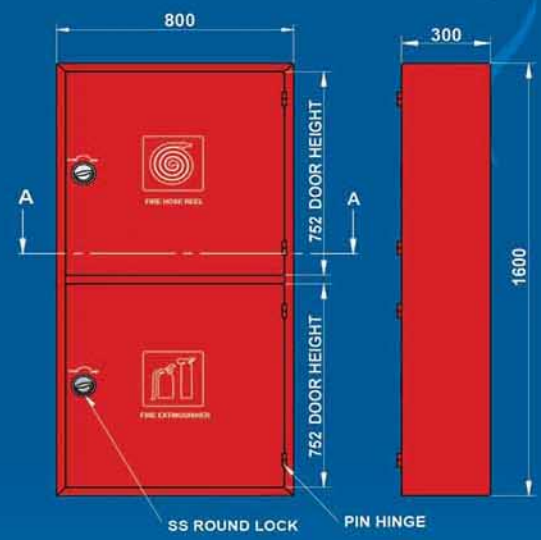
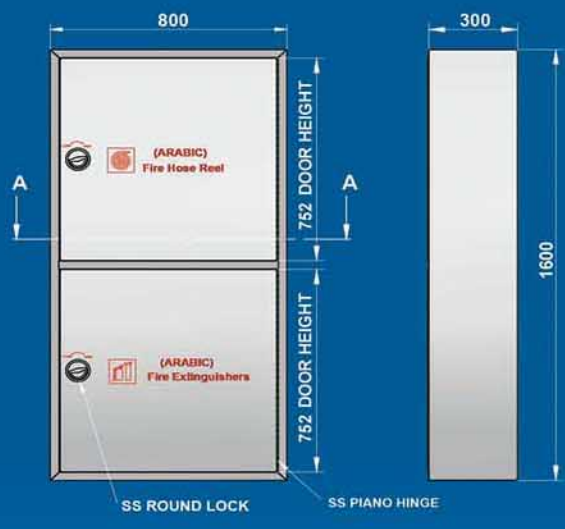
Industrial Area 13 - Sharjah - United Arab Emirates
Tel : +971 6 538 55 72 - Fax : +971 6 538 40 45 - P.O.Box : 47632 Sharjah - UAE.
Doha Office No. +974 66 858734 - +974 66 157440
Email : sales@alosoolluae.com - Website : www.alosoolluae.com

AL OSOOL



AL OSOOL BLDG. METALLIC CONST. IND. LLC.
 الأصول لصناعة الأشغال المعدنية للمباني ذ.م.م

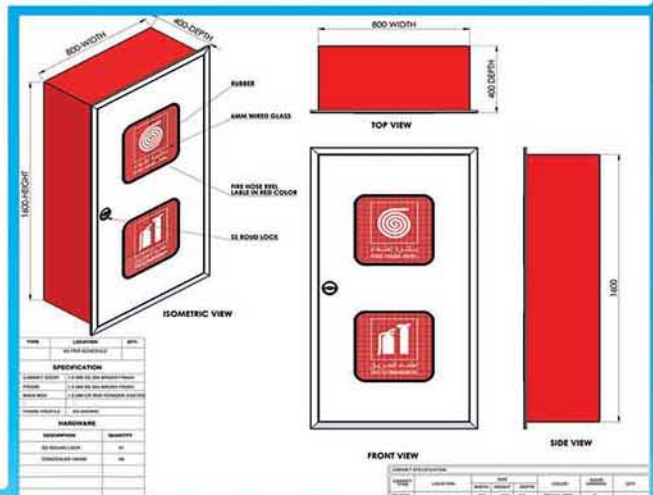
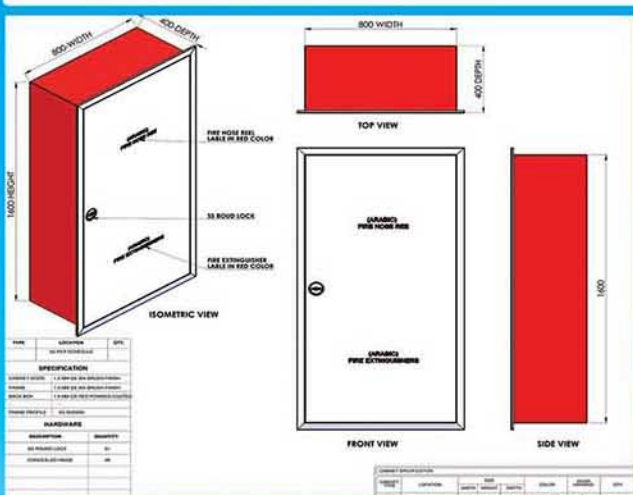
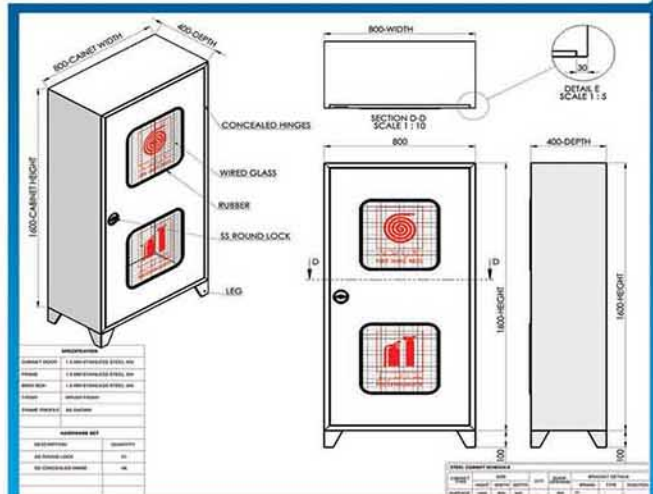
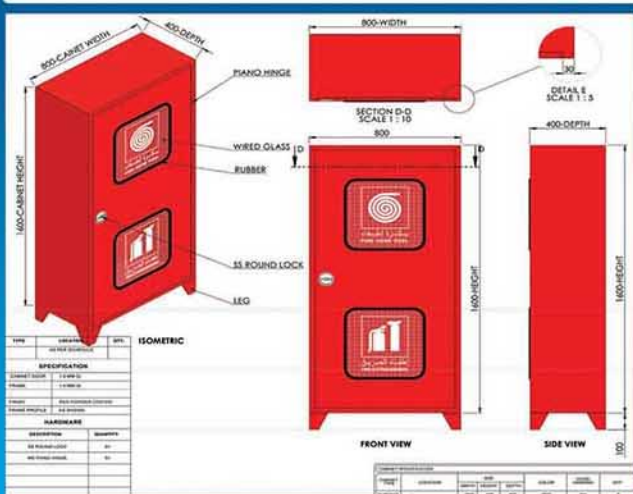
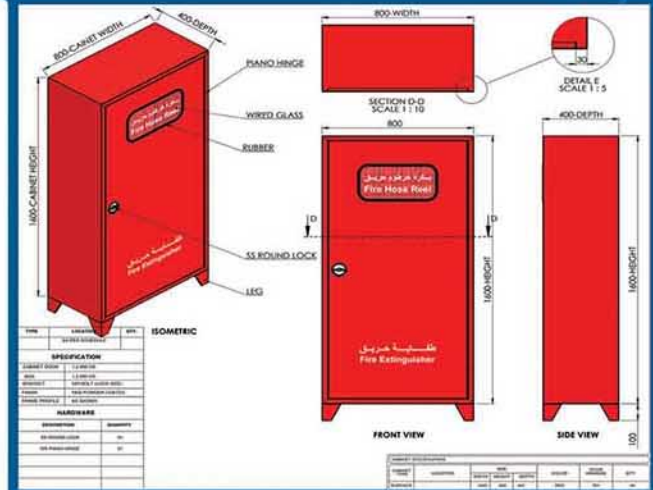
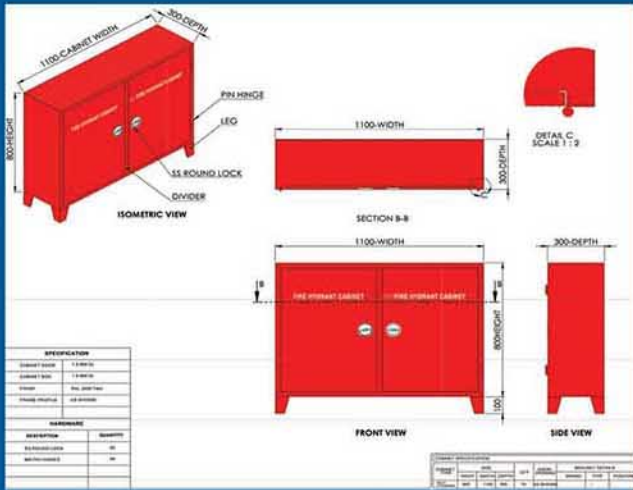
FIRE CABINET STANDARD DIMENSIONS



Industrial Area 13 - Sharjah - United Arab Emirates
 Tel : +971 6 538 55 72 - Fax : +971 6 538 40 45 - P.O.Box : 47632 Sharjah - UAE.
 Doha Office No. +974 66 858734 - +974 66 157440
 Email : sales@alosooulae.com - Website : www.alosooulae.com



KUWAIT STANDARD CABINET





Sales dep. contact

ADEL QADRI

UAE : 00971551000655

QATAR : 0097466225920

RAJEEV K.NAIR

UAE : 00971508954775

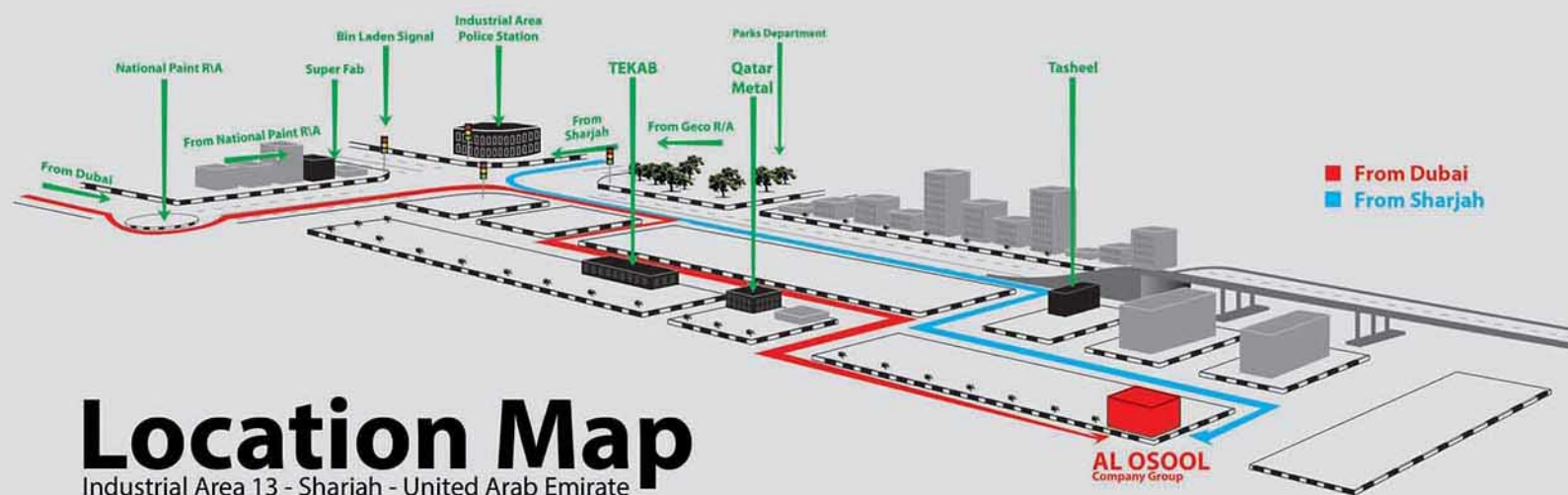
QATAR : 0097466858734

RATHISH SOMAN

UAE : 00971506286817

Email : sales@alooluae.com

Website : www.alooluae.com



Location Map

Industrial Area 13 - Sharjah - United Arab Emirate

Industrial Area 13 - Sharjah - United Arab Emirates
 Tel : +971 6 538 55 72 - Fax : +971 6 538 40 45 - P.O.Box : 47632 Sharjah - UAE.
 Doha Office No. +974 66 858734 - +974 66 157440
 Email : sales@alooluae.com - Website : www.alooluae.com



HOSE REEL CABINET



MODEL A DOUBLE COMPARTMENT HOSE REEL CABINET		
TECHNICAL SPECIFICATION		
Overall Dimension	740mm (W) x 1540mm (H) x A (D)	
Material	Mild Steel	
Thickness	1.2mm	
Installation	Surface / Wall Mounted, Recessed	
Capacity	Manual or Automatic swing Hose Reel 3/4" or 1", & 2pcs Fire Extinguisher	
Paint Finish	Epoxy Powder Red / White, minimum 70 micron.	
Code No.	Dimension A (Depth) mm	Type
HRS007-MS-400-RD	400	Surface / Wall Mounted
HRS007-MS-320-RD	320	Surface / Wall Mounted
HRS007-MS-250-RD	250	Surface / Wall Mounted
HRS008-MS-400-RD	400	Recessed
HRS008-MS-320-RD	320	Recessed
HRS008-MS-250-RD	250	Recessed
HRS008-MS-400-SS*	400	Recessed
HRS008-MS-320-SS*	320	Recessed
HRS008-MS-250-SS*	250	Recessed

* Door and architrave in stainless steel



MODEL B DOUBLE COMPARTMENT PIVOT TYPE HOSE REEL CABINET		
TECHNICAL SPECIFICATION		
Overall Dimension	740mm (W) x 1540mm (H) x A (D)	
Material	Mild Steel	
Thickness	1.5mm (Door), 1.2mm (Body)	
Installation	Surface / Wall Mounted, Recessed	
Capacity	Manual or Automatic Fixed Type Hose Reel 3/4" or 1", & 2pcs Fire Extinguisher	
Paint Finish	Epoxy Powder Red / White, minimum 70 micron.	
Code No.	Dimension A (Depth) mm	Type
HRS002-MS-420-WH	420	Surface / Wall Mounted (19" Drum)
HRS002-MS-450-WH	450	Surface / Wall Mounted (22" Drum)
HRS005-MS-420-WH	420	Recessed (19" Drum)
HRS005-MS-450-WH	450	Recessed (22" Drum)

Optional: Electrolytic Galvanised (EG) or stainless steel material available on request.

The products specified in this brochure are subjected to continuous development and improvement and are subject to alterations without prior notice. All dimensions are in mm unless otherwise specified.

HOSE REEL CABINET



MODEL C SINGLE COMPARTMENT PIVOT TYPE HOSE REEL CABINET

TECHNICAL SPECIFICATION

Overall Dimension	740mm (W) x 790mm (H) x A (D)
Material	Mild Steel
Thickness	1.2mm Body, 1.5mm Door
Installation	Surface / Wall Mounted / Recessed
Capacity	Manual or Automatic Hose Reel Fixed Type 3/4" or 1" Hose up to 36m
Paint Finish	Epoxy Powder Red or White, minimum 70 micron.

Code No.	Dimension A (Depth) mm	Type
HRS004-MS-420-WH	420	Surface / Wall Mounted (19" Drum)
HRS004-MS-450-WH	450	Surface / Wall Mounted (22" Drum)
HRS001-MS-420-WH	420	Recessed (19" Drum)
HRS001-MS-450-WH	450	Recessed (22" Drum)

MODEL D DOUBLE COMPARTMENT HOSE REEL CABINET

TECHNICAL SPECIFICATION

Overall Dimension	1050mm (W) x 800mm (H) x A (D)
Material	Mild Steel
Thickness	1.2mm
Installation	Surface Mounted / Recessed
Capacity	Manual or Automatic Swing Type Hose Reel 1" or 3/4", & 1 No Fire Extinguisher 9kg
Paint Finish	Epoxy Powder Red, minimum 70 micron.

Code No.	Dimension A (Depth) mm	Type
HRS003-MS-400-RD	400	Surface / Wall Mounted
HRS003-MS-320-RD	320	Surface / Wall Mounted
HRS003-MS-250-RD	250	Surface / Wall Mounted
HRS006-MS-400-RD	400	Recessed
HRS006-MS-320-RD	320	Recessed
HRS006-MS-250-RD	250	Recessed

*Door with plastic opening upon request.

MODEL E HOSE REEL CABINET

TECHNICAL SPECIFICATION

Overall Dimension	700mm (W) x 800mm (H) x A (D)
Material	Mild Steel
Thickness	1.2mm
Installation	Surface / Wall Mounted, Recessed
Capacity	Manual or Automatic Swing Type Hose Reel (22" or 19" Drum) 3/4" or 1"
Paint Finish	Epoxy Powder Red, minimum 70 micron.

Code No.	Dimension A (Depth) mm	Type
HRS047-MS-400-RD	400	Surface / Wall Mounted
HRS047-MS-320-RD	320	Surface / Wall Mounted
HRS047-MS-250-RD	250	Surface / Wall Mounted
HRS046-MS-400-RD	400	Recessed
HRS046-MS-320-RD	320	Recessed
HRS046-MS-250-RD	250	Recessed

Optional: • Electrolytic Galvanised (EG) or stainless steel material available on request.

The products specified in this brochure are subjected to continuous development and improvement and are subject to alterations without prior notice. All dimensions are in mm unless otherwise specified.

HOSE REEL CABINET ARCHITRAVE



MODEL F HOSE REEL CABINET

TECHNICAL SPECIFICATION

Overall Dimension	Hose Reel mounting against back wall
Material	Mild Steel
Thickness	0.9mm
Installation	Surface / Wall Mounted
Capacity	Swing Type Hose Reel (22" Drum) 3/4" or 1"
Paint Finish	Epoxy Powder Red, minimum 70 micron.

Code No.	Dimension A (Width) mm	Dimension B (Depth) mm
HRS045-MS-750-RD	750	380
HRS045-MS-800-RD	800	400

MODEL G HOSE REEL & FIRE EXTINGUISHER CABINET ARCHITRAVE

TECHNICAL SPECIFICATION

Overall Dimension	1090mm (W) x 840mm (H)
Recessed Wall	
Opening Dimension	1050mm (W) x 800mm (H)
Thickness	1.2mm
Installation	Recessed
Capacity	1 No Fire Extinguisher & 1 No Swing Hose Reel
Paint Finish	Epoxy Powder Red, minimum 70 micron.

Code No.	Material
HRS010-MS-MG-RD	Mild Steel
HRS010-SS-MG-NA	Stainless Steel

MODEL H HOSE REEL CABINET ARCHITRAVE

TECHNICAL SPECIFICATION

Overall Dimension	740mm (W) x 840mm (H)
Recessed Wall	
Opening Dimension	700mm (W) x 800mm (H)
Thickness	1.2mm
Installation	Recessed
Capacity	1 No Swing Hose Reel
Paint Finish	Epoxy Powder Red, minimum 70 micron.

Code No.	Material
HRS009-MS-MH-RD	Mild Steel
HRS009-SS-MH-NA	Stainless Steel

MODEL I CABINET DOOR MOUNTING (FIXED HOSE REEL)

TECHNICAL SPECIFICATION

Overall Dimension	770mm (W) x 770mm (H) x A (D)
Material	Mild Steel
Thickness	1.5mm
Capacity	Fixed Hose Reel 1" or 3/4"
Installation	Surface / Wall Mounted, Recessed
Paint Finish	Red Epoxy Powder, minimum 70 micron.

Code No.	Dimension A (Depth) mm	Type
HRS095-MS-360-RD	360	Recessed
HRS095-MS-300-RD	300	Recessed
HRS095-MS-250-RD	250	Recessed
HRS094-MS-360-RD	360	Surface / Wall Mounted
HRS094-MS-300-RD	300	Surface / Wall Mounted
HRS094-MS-250-RD	250	Surface / Wall Mounted

Optional: Electrolytic Galvanised (EG) or stainless steel material available on request.

The products specified in this brochure are subjected to continuous development and improvement and are subject to alterations without prior notice. All dimensions are in mm unless otherwise specified.

HOSE REEL CABINET



MODEL J CABINET (FIXED HOSE REEL)

TECHNICAL SPECIFICATION

Overall Dimension	740mm (W) x 1040mm (H) x A (D)
Material	Mild Steel
Thickness	1.2mm
Capacity	Fixed Hose Reel 1" or 3/4"
Installation	Surface / Wall Mounted, Recessed
Paint Finish	Red Epoxy Powder, minimum 70 micron.

Code No.	Dimension A (Depth) mm	Type
HRS097-MS-350-RD	350	Recessed
HRS097-MS-255-RD	255	Recessed
HRS097-MS-185-RD	185	Recessed
HRS096-MS-350-RD	350	Surface / Wall Mounted
HRS096-MS-255-RD	255	Surface / Wall Mounted
HRS096-MS-185-RD	185	Surface / Wall Mounted

MODEL K FREE STANDING CABINET

TECHNICAL SPECIFICATION

Overall Dimension	700mm (W) x 1360mm (H) x A (D)
Material	Mild Steel
Thickness	1.2mm
Capacity	Swing Hose Reel 1" or 3/4"
Installation	Floor mounted
Paint Finish	Red / White Epoxy Powder, minimum 70 micron.

Code No.	Dimension A (Depth) mm
HRS092-MS-400-WH	400
HRS092-MS-320-WH	320
HRS092-MS-250-WH	250

MODEL L FREE STANDING CABINET

TECHNICAL SPECIFICATION

Overall Dimension	750mm (W) x 1500mm (H) x 350mm (D)
Material	Mild Steel
Thickness	1.2mm
Capacity	Swing Hose Reel 1" or 3/4"
Installation	Floor mounted
Paint Finish	Red / White Epoxy Powder, minimum 70 micron.

Code No.	HRS093-MS-350-WH
-----------------	------------------

Optional: Electrolytic Galvanised (EG) or stainless steel material available on request.

The products specified in this brochure are subjected to continuous development and improvement and are subject to alterations without prior notice. All dimensions are in mm unless otherwise specified.

FOAM HOSE REEL



Foam hose reel is complete with a foam inductor used to supply mixture of foam concentrate and water. Foam solution is most effective for extinguisher fire involving flammable liquid such as petrol and solvents.

FEATURES

- Inductor for 3% or 6% AFFF concentrate
- Flowrate 80L/m at 6bar inlet pressure
- Maximum working pressure 15bar
- Foam tank Stainless steel or Fiber glass 50L suitable for 15 mins. of operation
- Foam supply line can be close with valve for water application only
- Thickness of cabinet : Mild steel 1.2mm
- Dimension in mm : 740 (W) x 1200 (H) x 250 (D)
- Nozzle setting specific to Jet function

APPLICATION

- Petrol stations
- Oil and solvent storage area

Code No	FOS088-MS-STD-RD
----------------	-------------------------

SLIM LINE HOSE REEL



The Slim Line hose reel is designed for installation in shopping centres where shop front space is at a premium. It is designed to be fixed in a cavity between the walls of adjacent shops thereby occupying the minimum shop front width.

Operation : Pull hose reel out of cabinet and swing hose reel to the desire direction for withdrawal of hose.

Suitable for 3/4" and 1" swing hose reel

Material : Mild Steel 1.5mm

Installation : Recessed and wall mounted

Code No.	Dimension in mm
CAB430-MS-GER-RD	300 (W) x 1200 (H) x 740 (D)
CAB431-MS-GER-RD	340 (W) x 1240 (H) x 740 (D)

Optional: Electrolytic Galvanised (EG) or stainless steel material available on request.

The products specified in this brochure are subjected to continuous development and improvement and are subject to alterations without prior notice. All dimensions are in mm unless otherwise specified.

2 WAY AND 4 WAY BREECHING INLET CABINET



2 WAY BREECHING INLET CABINET	
TECHNICAL SPECIFICATION	
Dimension	595mm x 395mm x 295mm
Material	Mild Steel
Thickness	0.9mm
Glass	Wire Meshed Reinforcement
Installation	Recess Mounted
Paint Finish	Epoxy Powder Red
Manufacture	BS 5041 Part 5
Code No	DRS096-MS-STD-RD, DRS096-MS-EXP-RD

4 WAY BREECHING INLET CABINET	
TECHNICAL SPECIFICATION	
Dimension	595mm x 595mm x 295mm
Material	Mild Steel
Thickness	0.9mm
Glass	Wire Meshed Reinforcement
Installation	Recess Mounted
Paint Finish	Epoxy Powder Red
Manufacture	BS 5041 Part 5
Code No	WRS116-MS-004-RD

DRY RISER AND WET RISER OUTLET CABINET



Night Latch Lock/ →
Bird Lock

LANDING VALVE CABINET	
TECHNICAL SPECIFICATION	
Dimension	395mm(w) x 595mm(H) x 295mm(D)
Material	Mild Steel
Thickness	1.2mm
Glass	Wire Mesh Reinforcement
Installation	Recess Mounting
Paint Finish	Epoxy Powder Red
Code No	CAB286-MS-LDV-RD

PRESSURE REDUCING VALVE CABINET	
TECHNICAL SPECIFICATION	
Dimension	455mm(w) x 750mm(H) x 307mm(D)
Material	Mild Steel
Thickness	1.2mm
Glass	Wire Mesh Reinforcement
Installation	Recess Mounting
Paint Finish	Epoxy Powder Red
Code No	CAB295-MS-PRV-UK (with key lock)

Optional: Night Latch Lock/Bird Lock available on request.

Optional: Electrolytic Galvanised (EG) or stainless steel material available on request.

The products specified in this brochure are subjected to continuous development and improvement and are subject to alterations without prior notice. All dimensions are in mm unless otherwise specified.

HOSE CABINET



MODEL A HOSE CABINET

TECHNICAL SPECIFICATION

Dimension	800mm (W) x 1000mm (H) x 300mm (D)
Material	Mild Steel
Thickness	1.2mm
Installation	Wall Mounted
Capacity	1 No Landing Valve, 1 No Hose Cradle, 1 No 2-1/2" x 30m Hose
Paint Finish	Epoxy Powder Red
Code No	WRS087-MS-MAX-RD

MODEL B HOSE CABINET

TECHNICAL SPECIFICATION

Dimension	900mm (W) x 1100mm (H) x 300mm (D)
Material	Mild Steel
Thickness	1.2mm
Installation	Wall Mounted
Capacity	1-1/2" or 2-1/2" Hose Rack Assembly
Paint Finish	Epoxy Powder Red
Code No	WRS087-MS-MBX-RD

MODEL C HOSE CABINET

TECHNICAL SPECIFICATION

Dimension	560mm (W) x 1163mm (H) x 300mm (D)
Material	Mild Steel
Thickness	0.9mm
Installation	Floor Mounted
Capacity	2 Nos Diffuser Nozzle, 2 Length of Hose 2-1/2" x 30m (Type 1)
Paint Finish	Epoxy Powder Red
Code No	HYD071-MS-MC-RD

MODEL D HOSE CABINET

TECHNICAL SPECIFICATION

Dimension	590.0mm (W) x 610.0mm (H) x 340.0mm (D)
Material	Mild Steel
Thickness	0.9mm
Installation	Wall Mounted
Capacity	2 Nos Diffuser Nozzle, 2 Length of Hose 2-1/2" x 30m (Type 1)
Paint Finish	Epoxy Powder Red
Code No	HYD071-MS-MDX-RD

MODEL E HOSE CABINET

TECHNICAL SPECIFICATION

Dimension	900mm (W) x 750mm (H) x 500mm (D)
Material	Mild Steel
Thickness	1.2mm
Installation	Floor Mounted
Capacity	2 Nos Fire Extinguisher 9.0kg
	2 Nos 2-1/2" x 30m Canvas Hose (Type 1)
	2 Nos Diffuser Nozzle
	1 No Dividing Breeching
Paint Finish	Epoxy Powder Red
Code No	HYD085-MS-ME-RD

Optional: Electrolytic Galvanised (EG) or stainless steel material available on request.

The products specified in this brochure are subjected to continuous development and improvement and are subject to alterations without prior notice. All dimensions are in mm unless otherwise specified.

FIRE EXTINGUISHER CABINET



TECHNICAL SPECIFICATION			
Thickness	0.9mm		
Installation	Wall Mounted		
Paint Finish	Epoxy Powder Red		
Code No.	Capacity	Size	Material
FEX146-MS-025-RD	1 pc 2.5kg Box	225mm (W) x 560mm (H) x 150mm (D)	Mild Steel
FEX146-MS-045-RD	1 pc 6.0kg Box	280mm (W) x 546mm (H) x 203mm (D)	Mild Steel
FEX146-MS-090-RD	1 pc 9.0kg Box	280mm (W) x 710mm (H) x 260mm (D)	Mild Steel
FEX146-MS-LOC-RD	1pc 9kg Box	280mm (W) x 660mm (H) x 220mm (D)	Mild Steel
FEX146-MS-050-RD	1pc 5.0kg CO2	280mm (W) x 830mm (H) x 260mm (D)	Mild Steel
FEX146-SS-STD-NA	1 pc 9.0kg Box	280mm (W) x 710mm (H) x 260mm (D)	Stainless Steel
FEX145-MS-090-RD	2pcs 9kg Box	560mm (W) x 710mm (H) x 260mm (D)	Mild Steel
FEX166-MS-050-RD	2pcs 5kg CO2	560mm (W) x 820mm (H) x 260mm (D)	Mild Steel



TECHNICAL SPECIFICATION			
Thickness	0.9mm		
Installation	Wall Mounted		
Paint Finish	Epoxy Powder Red		
Code No.	Capacity	Size	Material
FEX169-SS-060-NA	1 pc 6.0kg Box	280mm (W) x 570mm (H) x 250mm (D)	Stainless Steel
FEX169-SS-090-NA	1 pc 9.0kg Box	280mm (W) x 690mm (H) x 250mm (D)	Stainless Steel
FEX169-MS-060-RD	1 pc 6.0kg Box	280mm (W) x 570mm (H) x 250mm (D)	Mild Steel
FEX169-MS-090-RD	1 pc 9.0kg Box	280mm (W) x 690mm (H) x 250mm (D)	Mild Steel
FEX169-MS-050-RD	1 pc 5.0kg CO2	280mm (W) x 830mm (H) x 250mm (D)	Mild Steel
FEX146-FG-060-T2	1 pc 6.0kg ABC or 2.0kg CO2	300mm (W) x 670mm (H) x 230mm (D)	Plastic
FEX146-FG-060-T3	2 pcs 6.0kg ABC or 2.0kg CO2	540mm (W) x 715mm (H) x 270mm (D)	Plastic

Optional: Indoor and Outdoor Cabinets available on request.

Electrolytic Galvanised (EG) or stainless steel material available on request.

The products specified in this brochure are subjected to continuous development and improvement and are subject to alterations without prior notice. All dimensions are in mm unless otherwise specified.